

# EnergoControl

Thermostats



Controlling your heating system is important when creating the ideal indoor climate. Comfort is about when the temperature is “right” and “feels” good, just the way you want it.

Our thermostats allow the temperature to be controlled easily and precisely, down to the last degree. We offer a line of thermostats that complements our radiant heaters, but they also work equally well for other heating systems and solutions.

**ENERGOTECH**  
ENERGY EFFICIENT HEATING SYSTEMS

## T99-ERS



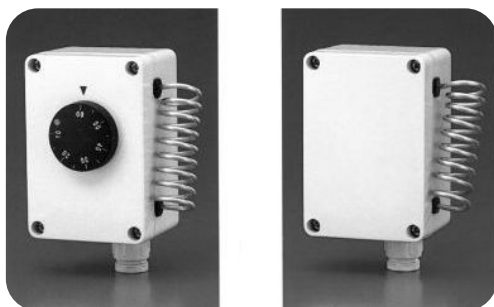
Electronic 1-step thermostat, for temperature control of room heating. Built-in temperature sensor and change-over relay output, external NTC sensor as optional extra.

For surface wall mounting. Hole pitch, center to center, 60 mm. Fits also over a standard wall junction box.

External adjustment knob. In order to eliminate the risk of tampering, the set point knob can be locked by means of a locking screw under the cover.

The thermostat are suitable for domestic homes, offices, public buildings, schools and also showrooms, churches, hotels, hospitals etc.

## T15, T15-DV



Electromechanical 1-step thermostats, for temperature control of room heating. Capillary tube sensor made of stainless steel. For surface-mounted wall mounting.

Available with an external or internal set point knob. High protection class.

The thermostats are suitable for industrial buildings, warehouses, workshops, sport centers, exhibition halls etc.

They can also be used in "tougher" environments such as car washes, green houses, fire hazard and agriculture premises.

### Technical Specifications

Type	Operating voltage	Rated current	Setting range	Switching differential	Sensor type	Set point knob	Appliance class	Protection class	Size HxWxD
T99-ERS	230V	16A	0-30°C	±1°C	NTC*	External	Class I	IP30	86x86x30 mm
T15	250V/400V	16A/6A	5-60°C	±1°C	Capillary tube	External	Class II	IP55	110x75x69 mm
T15-DV	250V/400V	16A/6A	5-60°C	±1°C	Capillary tube	Internal	Class II	IP55	110x75x59 mm

\* An external sensor can be connected as an alternative to the built-in sensor, if required. Ask for the ES-TG99, as an accessory.



25.09.10-01EN

# ENERGOTECH